



# HOW TO DRESS FOR SUCCESS HEAD TO TOE

Below are just a few examples of acceptable/unacceptable based on our dress code. *IF YOU ARE UNSURE IF SOMETHING IS UNACCEPTABLE, THE BEST CHOICE IS TO NOT WEAR IT!*

## YOUR HEAD



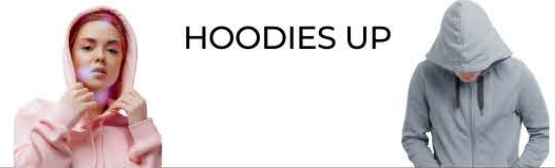
### ACCEPTABLE

CAPS, HATS. HOODS DOWN



### UNACCEPTABLE

HOODIES UP



## YOUR UPPER BODY AREA



### ACCEPTABLE

TANK TOPS MUST HAVE:

- ✓ STRAPS OVER EACH SHOULDER
- ✓ STRAPS 2-INCH WIDE AT THE SHOULDER



### UNACCEPTABLE

HALTER TOPS  
 TANK TOPS THAT EXPOSE SIDES OF TORSO  
 STRAPLESS SHIRTS  
 STRAPLESS DRESSES  
 SHIRTS OFF THE SHOULDERS  
 SPAGHETTI STRAPS



TOPS THAT EXPOSE, MIDDRIFT, CHEST OR ARE SEE THROUGH



UNDERGARMENTS/SUPPORTS WORN AS TOPS



NO SUNGLASSES, FACE PAINT/DECORATIONS, OR COSTUMES



# YOUR LOWER BODY AREA



## ACCEPTABLE

SHORTS, SKIRTS, DRESSES MUST

- ✓ REACH MID-THIGH
- ✓ NOT HAVE EXCESSIVE HOLES/RIPS
- ✓ NO HOLES ABOVE MID-THIGH



The purpose of the student dress code is to encourage students to "dress for success" and come to school properly prepared for participating in the educational process.

KUNA SCHOOL DISTRICT  
MIDDLE SCHOOL HANDBOOK



## UNACCEPTABLE

PANTS WITH EXCESSIVE HOLES/RIPS ABOVE MID-THIGH



SAGGING PANTS OR SHORTS THAT EXPOSE UNDERGARMENTS OR ARE SHORTER THAN MID-THIGH



# YOUR FEET



## ACCEPTABLE



P.E. MAY REQUIRE DIFFERENT SHOES



## UNACCEPTABLE

BEDROOM SLIPPERS



# NEVER ACCEPTABLE

## HATS, CLOTHING & ATTIRE THAT PROMOTES OR ADVERTISES

DRUGS \* ALCOHOL \* TOBACCO \* WEAPONS \* GANGS  
SEXIST \* RACIST \* VULGAR  
DISRUPTIVE OF THE EDUCATIONAL PROCESS

